



ACCESS POWER



Features & Benefits:

- ▶ Smart Charger
- ▶ Charges All Common Battery Types
- ▶ High Efficiency – 92%
- ▶ High Power Factor – 0.95
- ▶ Wireless Radio Standard on All Powerhouse Access Chargers
- ▶ 3 Phase Charge Modes Available– 480 VAC
 - 208/240 VAC
 - 575 VAC
- ▶ Multi-Volt DC Operation
- ▶ California Energy Commission (CEC) approved
- ▶ cUL Listed
- ▶ Low Energy Costs
- ▶ Low Weight and Small Footprint
- ▶ Designed for Wall or Rack Mount
- ▶ Simple Programming

- ▶  **Conventional**
- ▶  **Opportunity**
- ▶  **Fast**
- ▶  **Lithium**

POWERHOUSE ACCESS

RACK MOUNT AVAILABLE

Designed to be used without additional stand, making this ideal for replacing existing chargers.



DURABLE CASE

The robust case is coated with a textured baked powder polyester finish to protect against corrosion. Stackable up to four (4) high.

MULTI-CIRCUIT OPTION

Chargers can be equipped with our Singlepoint AC option, only one AC drop is required to connect 8 chargers (2, 4, 6, 8 options available). If desired, each level can be a different charger model.

UP TO 40KW FAST CHARGING

By stacking the chargers and connecting the modules in parallel, the shelf mount case allows us to offer high output fast chargers and dual circuit fast chargers.



BATTERY EVENT LOGGING & REPORTING

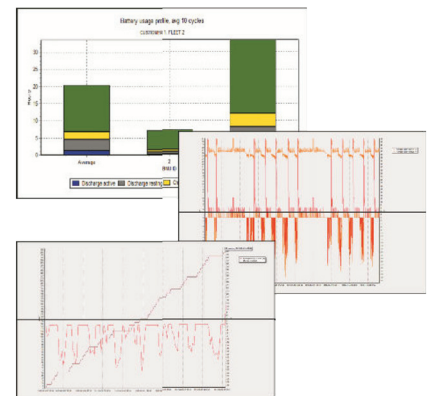


Battery Monitoring Unit (BMU)



USB Dongle

Individual Battery and Fleet Reporting Using Service Tool Software

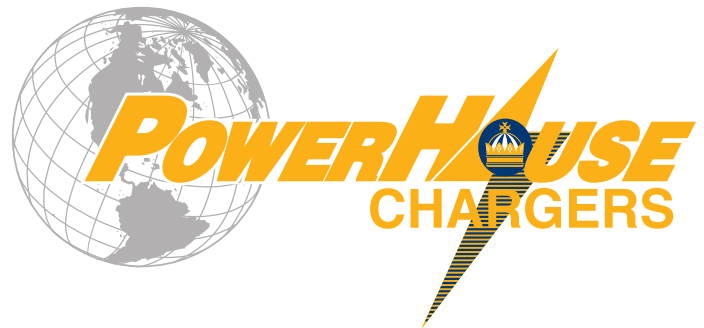


BEST BATTERY CHOICE

- ▶ Built-in Feature to FIFO Battery Choice
- ▶ External I/O Control and Display Available
- ▶ Create Your Own Group ID
- ▶ Charger Display Will Indicate Best Choice by Displaying Green for Each Group ID

GET-CLOUD

- ▶ Online Data Management
- ▶ Improved Fleet Management
- ▶ Remote Viewing
- ▶ Widget Based Web Interface
- ▶ One Button Reporting



1445 Majestic Drive | P.O. Box 990
Fremont, OH 43420 USA
+1.419.334.7181 | sales@crownbattery.com
www.crownbattery.com